

Civil Engineering Admission Procedure

1. Admission procedure

The admission procedure first checks whether the applicant comes from an initial scientific university pathway. Applicants from non-scientific pathways are not eligible for admission to the engineering program.

Eligible applicants may be considered for either Level 1 or Level 2, depending on their prior academic record. Level 1 generally corresponds to preparatory engineering studies (Bac+2) or a scientific Licence (Bac+3). Level 2 generally corresponds to applicants at Bac+4 level, such as students admitted to Year 2 of a scientific Master's pathway, or applicants holding a four-year Bachelor's degree, subject to institutional eligibility review.

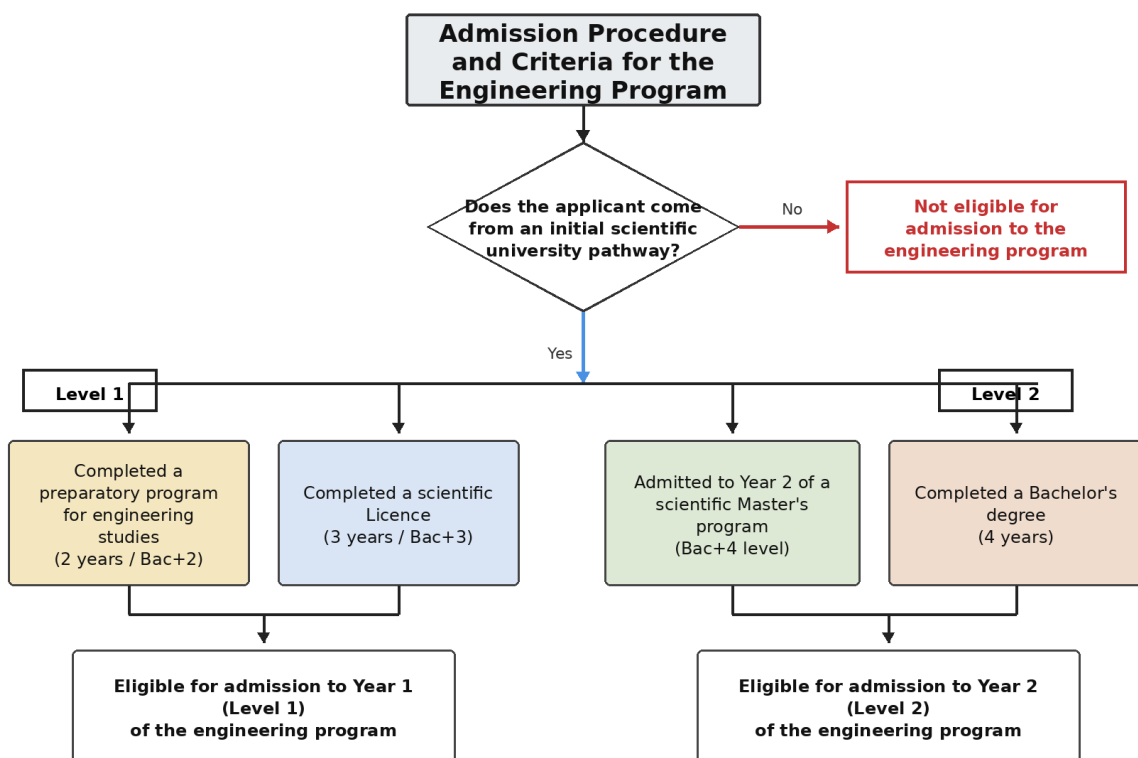


Figure 1. Eligibility-based admission pathway for the engineering program

2. Civil Engineering examples in the Tunisian educational system

The examples below are illustrative. In all cases, the applicant must have a scientific academic background relevant to Civil Engineering, and final admission remains subject to transcript review, field relevance, and institutional eligibility rules.

Entry level	Typical Tunisian profile	Civil Engineering example	Outcome
Level 1	Baccalaureate in Mathematics followed by a two-year preparatory scientific pathway (Bac+2).	Applicant seeks admission to Civil Engineering after completing two years of preparatory engineering studies.	Eligible for Level 1
Level 1	Baccalaureate in Experimental Sciences followed by a scientific Licence (Bac+3) in a field relevant to Civil Engineering.	Examples include applied sciences, geology, hydrology, materials, environmental sciences, or another closely related scientific field.	Eligible for Level 1
Level 1	Baccalaureate in Technical Sciences followed by preparatory engineering studies or a relevant scientific Licence.	Applicant has a technical-scientific background and later applies to Civil Engineering through a recognized scientific higher-education route.	Eligible for Level 1
Level 2	Scientific Bac + Licence + first year of a Master's pathway (M1), leading to admission to Year 2 of a scientific Master's program.	Examples include structures, hydraulics, geotechnics, construction materials, or construction management.	Eligible for Level 2
Level 2	Four-year Bachelor's degree in Civil Engineering or in a closely related engineering field.	Applicant has already completed a four-year higher-education program with core Civil Engineering content.	Eligible for Level 2

Eligibility note. The decision concerns academic eligibility for admission. It does not automatically guarantee final acceptance, which remains dependent on the institution's internal review and recognition of the applicant's prior studies.